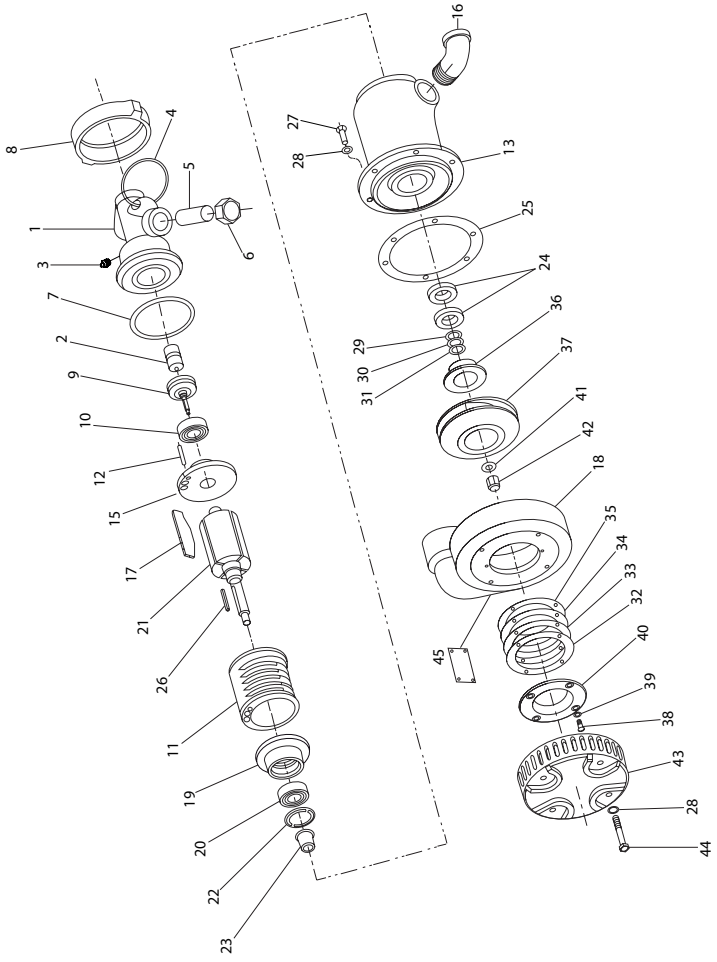


S35 Sump Pump- Exploded View



(Dwg. 47147327)



S35 Sump Pump- Parts List

Item	Part Description	Part Number	Item	Part Description	Part Number
* 1	Backhead, Strainer	S35-103	* 24	Seal, Water (2)	P35-153
* 2	Governor Valve Assembly	P25-424C	* 25	Gasket, Impeller Case	P35-113
* 3	Fitting, Grease	285B-438	* 26	Key, Impeller	P35-150
4	Handle	S35-227	* 27	Bolt, Brass (6)	P35-114
* 5	Screen, Air Strainer	205-1061	* 28	Washer, Spring (10)	D02-321
6	Cap, Air Strainer	S35-268	* 29	Shim, Impeller 0,125	P35-151-5
* 7	Gasket, Housing	P35-43	* 30	Shim, Impeller 0,250	P35-151-10
* 8	Nut, Housing	P35-282	* 31	Shim, Impeller 0,625	P35-151-25
9	Governor, Assembly	S35-424	* 32	Shim, Suction Seal 0,075	P35-145-3
10	Bearing, Rotor Rear	R5H-22	* 33	Shim, Suction Seal 0,125	P35-145-5
11	Cylinder	S35-3	* 34	Shim, Suction Seal 0,375	P35-145-15
12	Pin	P35-98	* 35	Shim, Suction Seal 0,780	P35-145-31
13	Housing, Motor	S35-40	* 36	Bushing, Impeller Hub	S35-41
* 15	End Plate, Rear	S35-12	* 37	Impeller	S35-143
* 16	Elbow, Exhaust	P35-587	* 38	Capscrew, Suction Seal (4)	P35-146
* 17	Vane (4)	R5H-42	* 39	Washer, Spring (4)	L01-67
* 18	Case, Impeller	S35-212	* 40	Seal, Suction	P35-144
19	End Plate, Front	S35-11	* 41	Washer, Impeller	P35-157
20	Bearing, Rotor Front	S35-21	* 42	Nut, Impeller	P25-142
21	Rotor	S35-53	* 43	Inlet	P25-1488
22	Retainer, Bearing	S35-400	* 44	Bolt, Inlet (4)	P35-117
23	Spacer, Impeller	S35-152	45	Name Plate	P25-99

* Denotes interchangeability with the 35A3 sump pump. Parts indented under an item are included with that item, but can be purchased separately.

Parts and Maintenance

When the life of the tool has expired, it is recommended that the tool be disassembled, degreased and parts be separated by material so that they can be recycled.

Tool repair and maintenance should only be carried out by an authorized Service Center.

Refer all communications to the nearest **Ingersoll Rand** Office or Distributor.

Related Documentation

For additional information refer to:

Air Sump Pump Product Safety Information Manual 16576597.

Air Sump Pump Product Information Manual 91358614.

Air Sump Pump Maintenance Information Manual 16609596.

Manuals can be downloaded from www.ingersollrandproducts.com.